

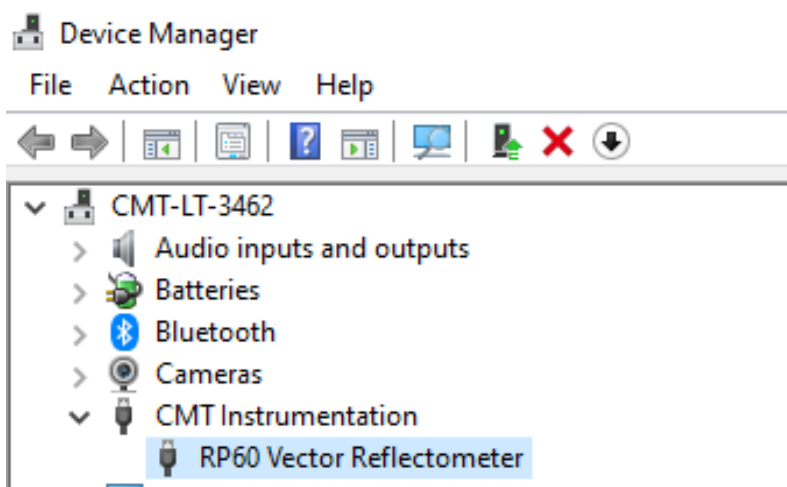
CMT EZUSB Driver Installation Procedure

Increased attention to cybersecurity has affected many industrial computer systems. Certain security features are either no longer optional or their configuration is under administrative privileges and not accessible to a regular user. Even though CMT VNA software is autonomous and does not depend on network connections, it still uses drivers following digital signature rules and regulations for security purposes.

Starting with v22.1.x CMT VNA software switches to a WINUSB driver to accommodate the Memory Integrity Core Isolation Windows OS security feature.

Installation of the new SW is transparent to the user. However, in certain cases, it might be necessary to return to the version with the EZUSB driver. This document describes the process of reinstalling the EZUSB driver.

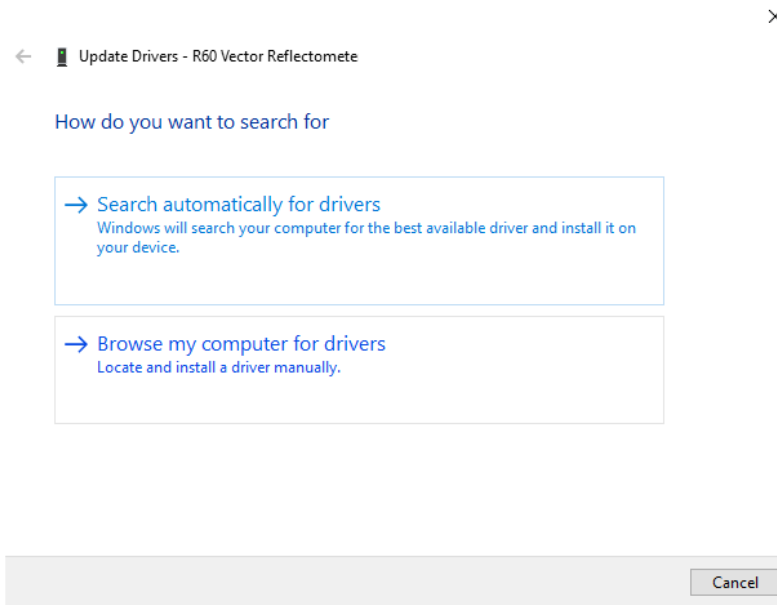
1. Make sure the CMT VNA SW version (preceding 22.1.x) is installed
2. Confirm the CMT Instrumentation line item in Device Manager indicates CMT VNA SW v22.1.x was installed previously
 - a. Connect a CMT VNA to a PC
 - b. Open Device Manager
3. Right-click on the instrument name and click on “Update Driver”



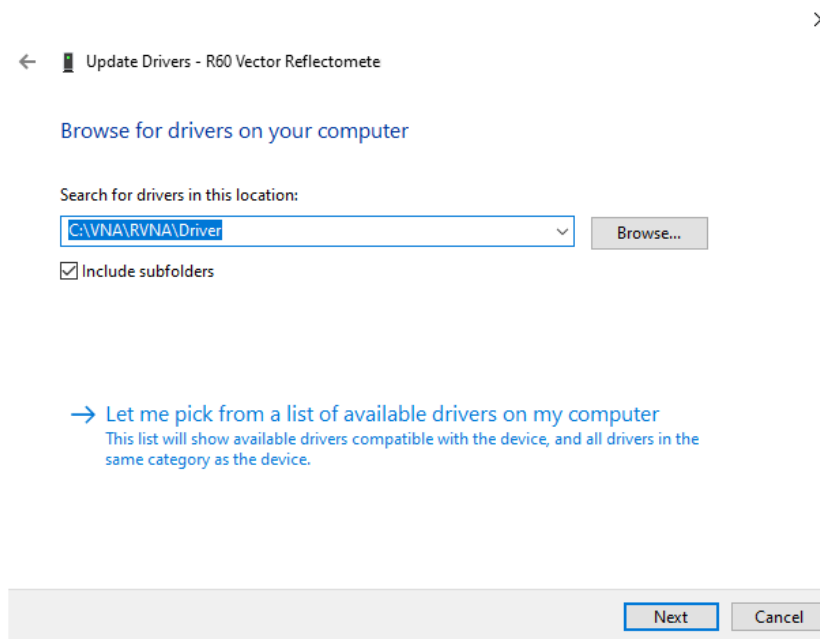


CMT EZUSB Driver Installation Procedure

4. Choose “Browse my computer for drivers”



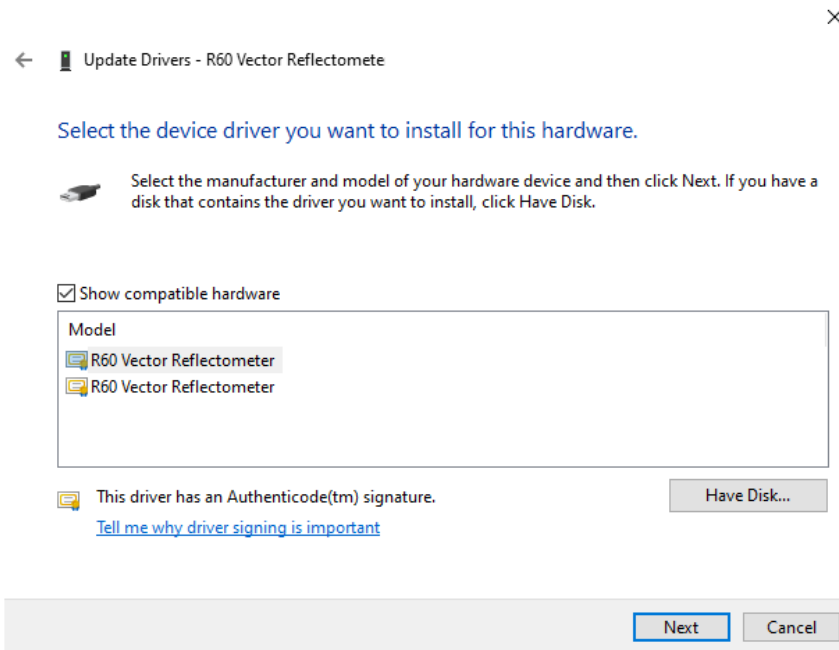
5. Choose “Let me pick a list of available drivers on my computer”



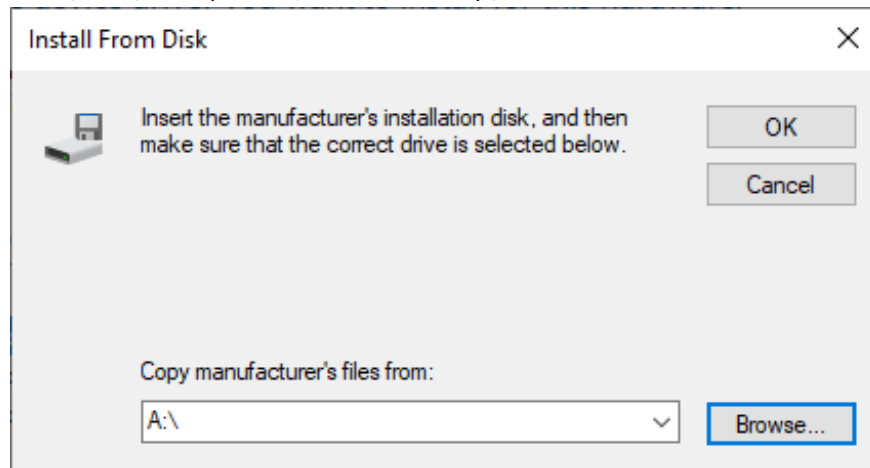


CMT EZUSB Driver Installation Procedure

6. Press “Have disk”



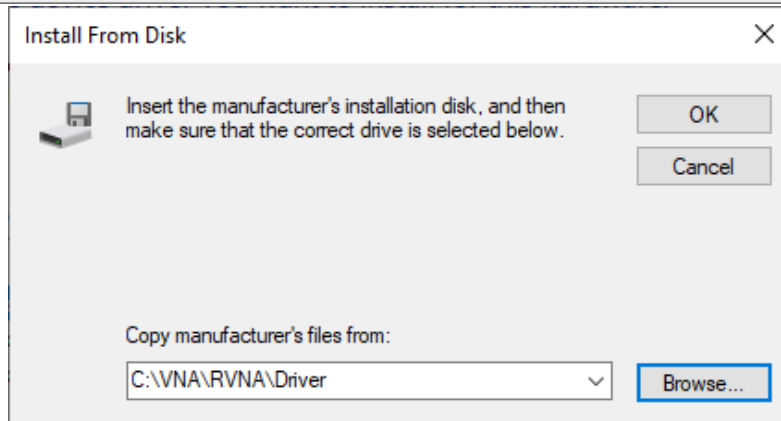
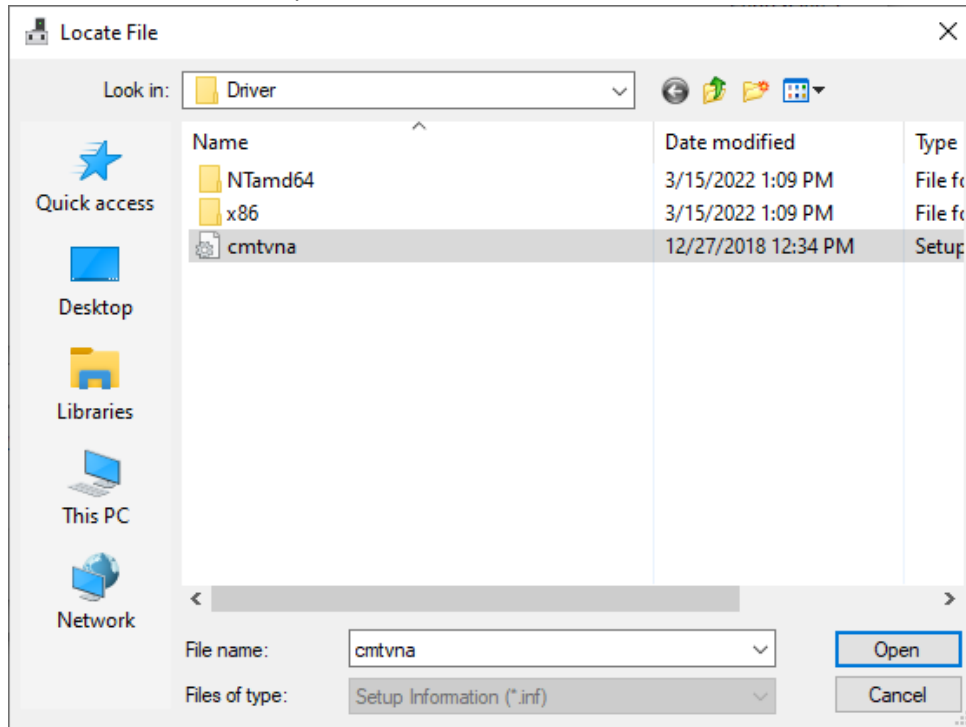
7. Browse to C:\VNA\RVNA(S2VNA,S4VNA,TRVNA)\Driver





CMT EZUSB Driver Installation Procedure

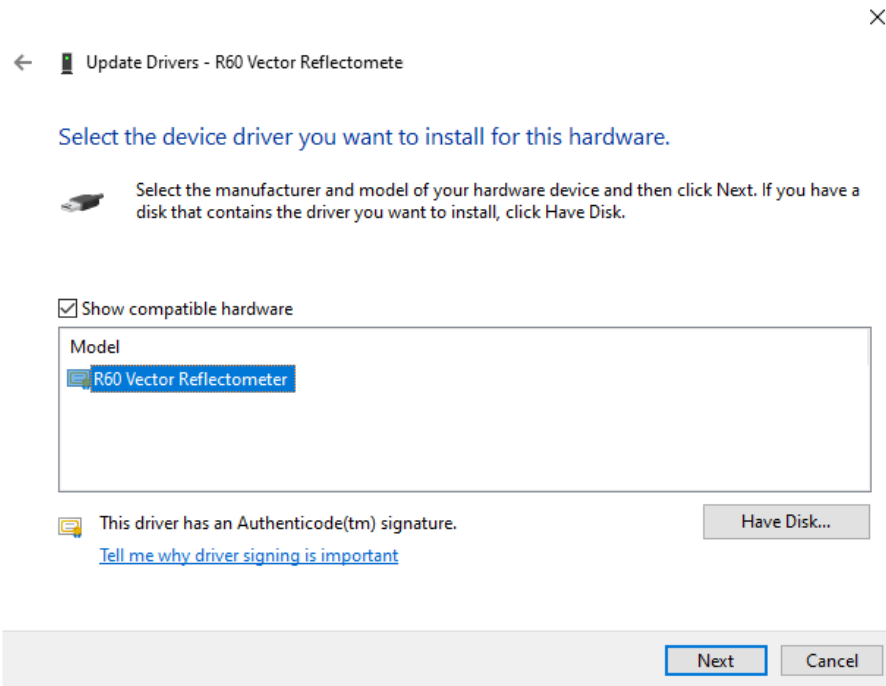
8. Choose "cmtvna.inf" file, "Open", "OK"



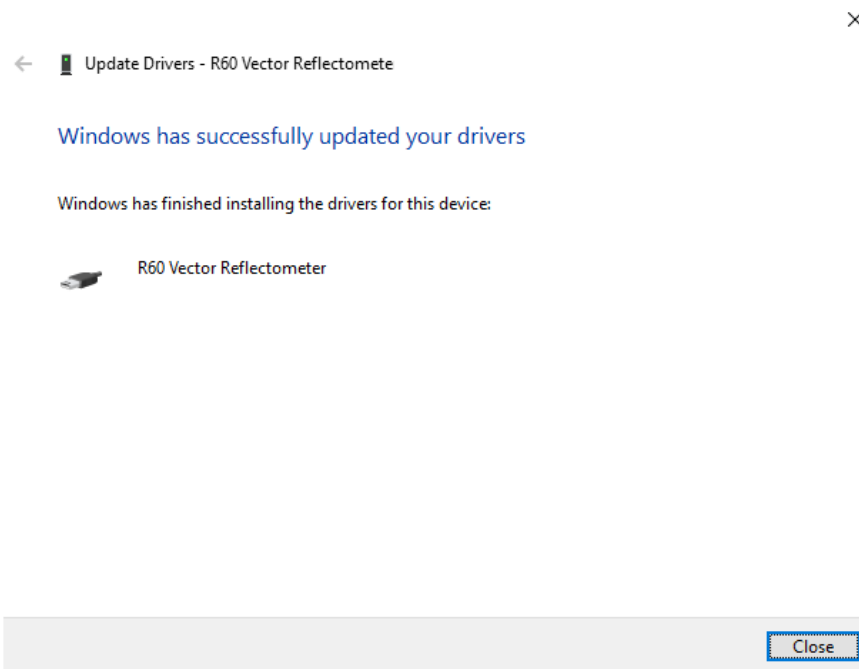


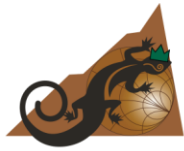
CMT EZUSB Driver Installation Procedure

9. Select the appropriate VNA, click “Next”



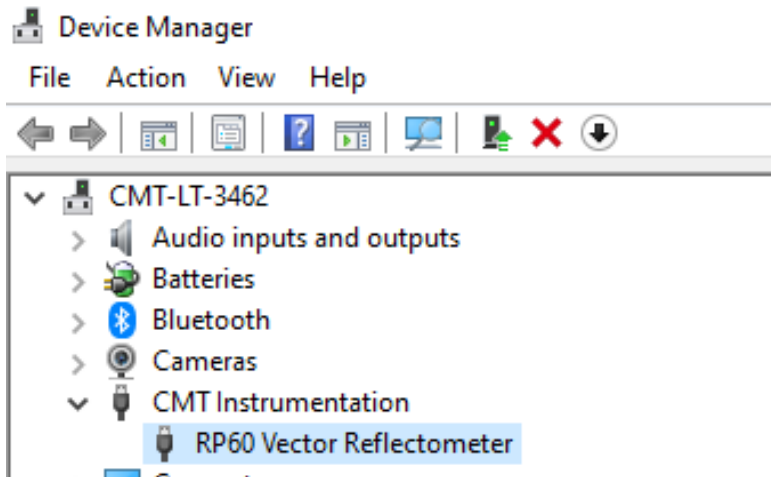
10. Select “Close”



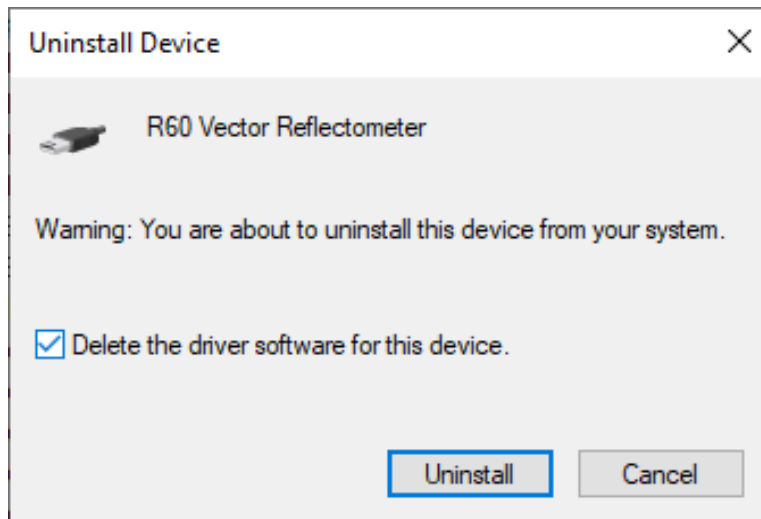


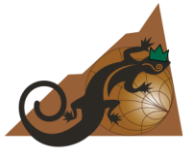
CMT EZUSB Driver Installation Procedure

11. Right-click on the correct VNA in Device Manager, and select “Uninstall Device”



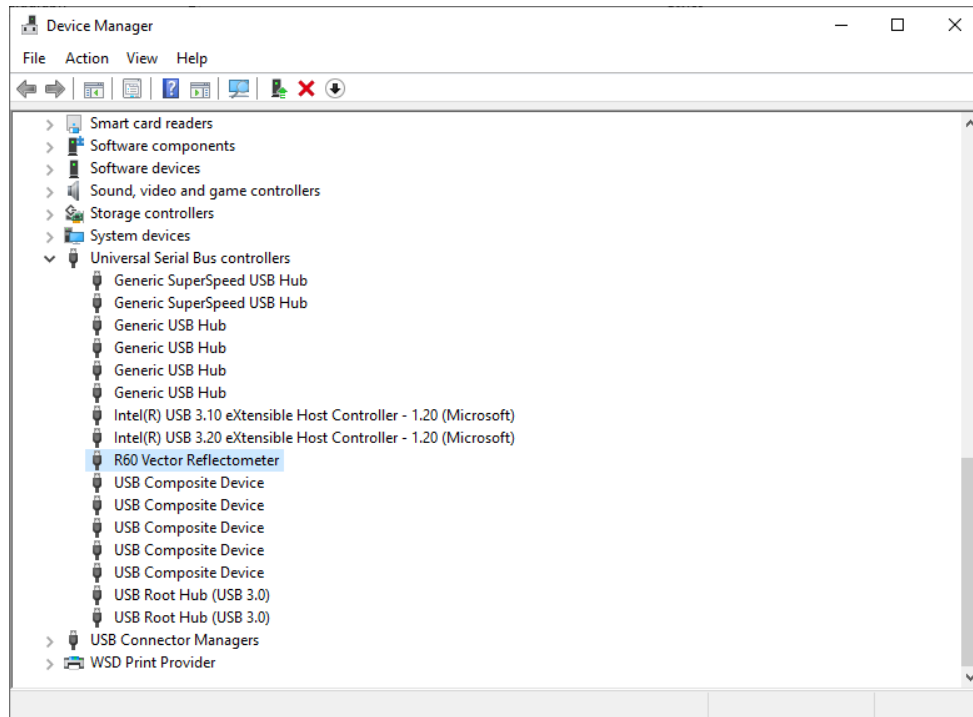
12. Make sure “Delete driver software for this device” is chosen





CMT EZUSB Driver Installation Procedure

13. Check that the VNA option is listed in Device Manager under Universal Serial Bus controllers



Note: It might be necessary to disable the Memory Integrity option in Device Security, Core Isolation to use CMT VNA SW preceding v22.1.x

